



First Parish, Hingham

## Old Ship Church

Unitarian Universalist

107 Main Street Hingham, MA 02043

(781) 749-1679

office@oldshipchurch.org www.oldshipchurch.org

**January 2014**

**We continue to fine tune the newsletter. This one is much shorter than last month!**

### In This Issue

**Sunday Services**

**R.E. Notes**

**Merrie Market Results!**

**Nurturing Council News**

### Musing...

Rev. Ken Read Brown, Minister

Though the dividing line of one year from the next is arbitrary in many ways, it is nevertheless ingrained in us as a time of reflection, a time to consider how we truly wish to live.

The culture at large tells us this reflection is mostly about diet and exercise - gym memberships apparently soar in January. Yet though taking good care of our physical selves is important, we also know that we are more than our bodies. So we ask ourselves a little more deeply: How shall we live?

This is a personal question for each of us, but it is also a question we can consider together. It is, after all, the question beneath just about every sermon I preach and every class I teach.

In this same spirit of reflection, for many years we Old Ship folks have said farewell to the old year and greeted the new year with a service of shared readings in the Parish House. The range of poetry and prose and story that people bring is lovely, speaking to many dimensions of our hearts and lives... and responding in one way or another to that question: How shall we live?

In the end, we will each have our own way of answering the question; and our answers in their specifics will quite naturally change and evolve over the course of a lifetime. Here is one set of responses to this age-old question, this from the Dalai Lama's book *Ethics for the New Millennium*. I often read these lines near the end of our new year's service:

May I become at all times, both now and forever  
A protector for those without protection  
A guide for those who have lost their way  
A ship for those with oceans to cross

### Quick Links

**Sunday Caring Sign Up**  
**Old Ship Calendar**

### Rev. Ken Read Brown's office hours:

My Parish House office hours are ordinarily Tuesday, Wednesday, Friday mornings from about 10:00 - 2:00 and by appointment. Monday is my day off, and Thursday my sermon writing day. My primary phone contact: 781-749-1679. The office answering machine includes my cell phone if you need to reach me quickly when I am not in the office. You may also email me at [oldshipkrb@comcast.net](mailto:oldshipkrb@comcast.net): my practice is to be on line during a period of each afternoon.

A bridge for those with rivers to cross  
A sanctuary for those in danger  
A lamp for those without light  
A place of refuge for those who lack shelter  
And a servant to all in need.

Finally, as the year turns, we might do well to recall that not only January 1, but every day offers opportunities for new beginnings. In the words of St. Catherine of Sienna: "Let us begin afresh every day."

I wish you all a beautiful new year; and if times get hard, I wish you all the care and love and support you need; may you know that I am here, and Old Ship is here, to be part of that care and love and support when you need it.

Peace and blessings,  
--Ken  
oldshipkrb@comcast.net

### **Sunday, January 5 "Is There a Perennial Wisdom?"**

Ken's sermon as we begin the new year - "Is There a Perennial Wisdom?" - will also serve as an introduction to a four-part series and to the class he will be leading beginning on January 8. Emerson said "the highest dwells within us." What does this mean? And is it true?



### **Sunday, January 12**

If there is indeed a perennial wisdom, how do we get some? Ken's second sermon in this series will be "Paths to the Perennial Wisdom."

### **Sunday, January 19**

On this Martin Luther King, Jr., weekend, Ken will explore the relationship between contemplation and social action, or to put it another way, the relationship between the perennial wisdom and the perennial search for justice. His sermon will be "Living Wisdom."

### **Sunday, January 26**

Ken's final sermon in the series on the "perennial wisdom" will be "What the World Needs Now?" Such things as wisdom, contemplation, meditation, and what we call spirituality, may seem like frills and extras in a world (and in our personal lives) filled with challenges that cry out for action. But are they?

#### **Childcare available** before Sunday services:

If you plan to attend Men's Breakfast, Women's Breakfast/Knitting or the Bodhisattva Study Group on Sunday morning & need childcare in order to do so, please call our office by Wednesday before the Sunday, and we will do our best to arrange childcare in the nursery for you.

### **Religious Education NOTES**

On Sunday, December 29th, there will be no Sunday school/Religious education classes... And on Sunday, January 5th, the R.E. Committee will have an "all age groups together" activity to ring in the New Year...

But then... on January 12th... the new term of curriculum begins... Our Jewish and

Christian Heritage.

I want to talk more about that.

Most Unitarian Universalist congregations provide a religious home to people from a wide assortment of religious backgrounds.... and even folks who were raised in the same faith tradition may have very different experiences and memories of that faith. Some still embrace much of their childhood faith with fondness. Some feel sad and injured when they look back.

As Unitarian Universalist religious educators, we accept the challenge of presenting some knowledge of as many faith traditions as we can, to our children, and in our Adult/Lifespan programs. And with most of the faiths we cover, that happens uneventfully and without worry. But when it's time to teach about Christianity, strong feelings sometimes come forth. Some folks are pleased and grateful... some feel angry, maybe even betrayed... and may not even be clear about why. I bring this to the fore so we can bravely "walk together" through all these possibilities.

If you find yourself with questions about "how" or "why" we teach what we do, or any other questions for that matter, please call me... or any of the members of the Religious Growth and Learning Committees...

Ideally, we should make an appointment and talk over a cup of tea. Experience has shown that the more heartfelt the topic, the less likely it is to be well-handled via e-mail... When we sit together, we get into each other's rhythm, we can see each other's facial expressions, and it's more likely that we will actually hear one another. And isn't that what we're here for?

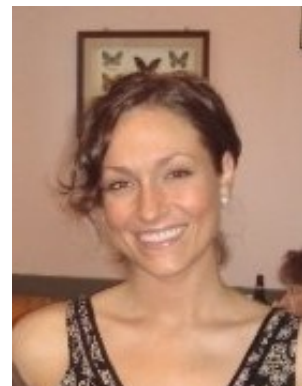
Warm socks and bright blessings...  
Beverly Tricco, Director of Religious Education



## Membership

Oh the weather outside is frightful....  
....But Old Ship is so delightful!

In the midst of the holidays, I think about all of the new people I have met at Old Ship and how this new community has made me feel so welcome. As the Membership Coordinator it is my job to make others feel welcome--but, more importantly, it's my pleasure. It is my hope that the gift I give to Old Ship is to make our new friends feel as welcome as I have felt. I see the gifts given by all of you every Sunday as you make it a point to introduce yourselves to a new face, and I think that is one of the best presents of all. Continue to give what you can and Old Ship will always be full of gifts; and these we will have all year round.



Kindly,  
Erin  
Membership Coordinator

## Life Learning Programs

### Most Sunday mornings...

Most Sunday mornings at Old Ship begin with gatherings in small circles in the Parish House parlor for sharing and spiritual enrichment. And we are all invited! Our web site has more detailed information about these opportunities:

The "Bodhisattva Study Group" meets at 8:30 on the first and third Sundays of each month, offering time for meditation and then conversation concerning a Buddhist book the group is reading.

"Men's Breakfast" meets at 8:30 on the second Sunday of each month for sharing and conversation (and bagels and coffee and tea too).

"Women's Breakfast and Knitting Group" meets on the fourth Sunday of each month for sharing and conversation. If you have questions please contact Diane Elliott at [dianeabbeyelliott@gmail.com](mailto:dianeabbeyelliott@gmail.com)

**Class: The Perennial Wisdom** - five sessions, Wed. Jan. 8- Feb. 5, 1:00 and 7:30 p.m. - Ken Read-Brown

Is there a perennial wisdom and philosophy found in - if sometimes hidden within - the traditions and religions of all times and peoples? Our primary text for this exploration of the teaching that, in Emerson's words, "the Highest dwells within us," will be "Perennial Wisdom for the Spiritually Independent", by Rami Shapiro. Ambitious class members may also wish to acquire Aldous Huxley's classic anthology, "The Perennial Philosophy". For more information and to sign up contact Ken Read-Brown at 781-749-1679 or [oldshipkrb@comcast.net](mailto:oldshipkrb@comcast.net). See the website for all life learning opportunities.

## Warrant

Commonwealth of Massachusetts

Warrant: February 2014

First Parish in Hingham Old Ship Church Meeting

Sunday, February 2, 2014 at Noon in the Parish House

To: Chris Sullivan, Clerk of the First Parish in Hingham, Hingham, Massachusetts:

In the name of the Commonwealth, you are hereby directed to notify and warn the members of the First Parish in Hingham, Massachusetts, qualified to vote on Parish affairs, to meet in the Parish House at 107 Main Street, Hingham, on Sunday, the 2 of February, at noon, then and there to act on the following articles, viz:

Article 1:

Will the Parish direct the Trustees of Invested Funds to stop any new direct investments in fossil fuel companies, as listed in the Carbon Tracker reports; and to divest all direct securities holdings in fossil fuel companies within the next three years? This directive does not prohibit investing in diversified, socially responsible, and climate-friendly securities, and securities in the renewable energy and efficiency sector.

Given under our hands this 12th day of December, two thousand thirteen.  
/S/ Elaine Gomez, President; Nina Wellford, Vice-President; Chris Sullivan, Clerk; and Trustees , Lindsay McGinnis, Davalene Cooper, Bryan Hurley, Pam Harty, Ron Pollara and Craig Russ.

### Pastoral Care Leadership Team

The Pastoral Care Leadership Team meets monthly with Ken and often coordinates meals and other forms of caring for Old Ship individuals and families in the midst of illness or crisis. If you have a need or are aware of a need that the PCLT might be able to help meet, you may be in touch with Ken or any member of the group. At Old Ship we all share in our mutual caring and helping one another; the Pastoral Care Leadership Team simply helps to identify needs and coordinate responses.



There are specifically three ways Old Ship members might want to help out:

- Rides: Would you be able to give an Old Ship parishioner a ride to church, either regularly or from time to time?
- Food: Would you be willing to prepare a casserole to be given to someone who could use a little extra help following a hospitalization or in the midst of illness or treatments?
- Companionship: Would you be willing to spend a few hours now and then with an Old Ship member when the primary caregiver in their household needs to be away from the home for a short while?

If you might be able to help in any of these ways, please be in touch with a member of the Pastoral Care Leadership Team. Thanks very much!

Abbey Diamond-Kissiday, [Abby@AbbyCMA.com](mailto:Abby@AbbyCMA.com), (781) 925-1305  
Betty Fernandes, [bettyfern@comcast.net](mailto:bettyfern@comcast.net), (781-749-0095)  
Elaine Gomez, [eh-gomez@comcast.net](mailto:eh-gomez@comcast.net), (781) 740-1663  
Alicia Harkness, [PAJL7@verizon.net](mailto:PAJL7@verizon.net), (781) 749-7825  
Fan Leonard, (781) 749-2852  
Bob Shepard, [cheney777@verizon.net](mailto:cheney777@verizon.net), (781) 878-2766  
Beverly Trico, [oldshipdre@oldshipchurch.org](mailto:oldshipdre@oldshipchurch.org), (781)-749-1679  
Ken Read-Brown, [oldshipkreb@comcast.net](mailto:oldshipkreb@comcast.net), (781-749-1679)

### Merrie Market Results!

Another Successful Merrie Market

What a community event! Last year was good, this year even better. Thank you to everyone for the donations, long hours, and the good feel of just being there. The number of smiling faces leaving with treasures, wreaths, crafts, bake goods, toys, books, and full stomachs was amazing. Some proceeds are still trickling in!

Thank You All!! Ron Pollara, Treasurer



Merrie Market Table	2012	2013
Baked Goods	\$552	\$410
Crafts	\$120	\$395
Gift Baskets	\$490	\$854
Joan's Cookies (New 2013)		\$337

Kitchen	\$544	\$722
Media Mart / Books	\$785	\$792
Raffle / Gingerbread Houses	\$183	\$159
Silent Auction	\$2,070	\$1,495
Toys	\$504	\$339
Treasures	\$3,556	\$5,418
Wreaths	\$3,177	\$2,615
Net (Before Expenses)	\$11,981	\$13,537
Adjusted Gross	\$10,512	\$12,000 (est)

## Nurturing Council News

In order to give the warmest welcome to all who gather with us on Sundays, (those who've been coming for decades and those who are visiting for the first time) we all need to do a few joyful things. The Nurturing Council asks you to:



- Wear your nametag at Fellowship Hour!
- Sign up for three Caring tasks throughout the year: (Greet, Usher, host Fellowship Hour, or staff the Welcome Table). Please use the link to SignUpGenius from Oldshipchurch.org Website, under Nurturing, Sunday Caring Tasks, where you can find descriptions and a link to the EASY signup form! Or if you need help, contact Janet Asnes at [asnes@comcast.net](mailto:asnes@comcast.net).

With these simple tasks, we will succeed in providing the warmest welcome to one another.

### **Community Dinners once again!**

Community Dinners were such a success in November, we're hoping you'll host in February!!...These small gatherings are for adults who come together to share a pot-luck dinner and conversation in the home of an Old Shipper. The goal is simple: to know one another better, old friends and new! Contact Brenda Black ([Blackpollara@verizon.net](mailto:Blackpollara@verizon.net)) if you'd like more info.

### **Carpool Christmas Caroling! Thank you!!**

Thank you to our many carolers of all ages - a couple of dozen at least! We had a beautiful afternoon visiting and singing for several Old Shippers as the snow gently fell. (And we think we sounded quite beautiful!)

Maybe next year you will join us!

--Ken Read-Brown

## Social Justice Council



**Join us for this year's Social Justice Dinner: Saturday January 11th**

"Let's Talk about Education" while sharing a pot-luck dinner. We would like to invite everyone to join us on Saturday January 11th at 6 pm in the Parish House for a pot-luck dinner and conversation about education. Childcare will be provided.



Why? To talk about what concerns you about our children's education and how our system of universal public education is working. What do we make of how US students are doing compared to students in other developed countries? Let's talk together, Old Shippers who are educators and those who are not, to explore these questions and think about what we can do to make a difference in our community and in our world.

RSVP: Sign up at Fellowship hour on January 5th or contact Brenda Black by January 9th: email: [blackpollara@verizon.net](mailto:blackpollara@verizon.net) or call 781 740 2835

**Social Justice Film Series:**

The Social Justice Film series will resume in February, so look for announcements of the films we will be showing and then discussing together.

If you missed seeing A Small Act (the 2010 documentary about access to education in rural Kenya), you can still see it: this film, along with many other thought-provoking films can be borrowed from the James W. Williamson Memorial Social Justice Film Collection, now stored in a labeled drawer in the tall chest in the Parlor of the Parish House.

**Opportunities to Serve Others:**

**Mather School**

Collecting supplies to help Mather students stay healthy this winter: In Jan and Feb we are collecting tissues, hand sanitizer, antiseptic wipes for Mather classrooms. Donations should be left in the Mather bin in the Parish House front hall.



And Collecting Children's Chapter Books: Now that the holidays have passed, would you check your shelves and donate any gently used children's chapter books to Mather's vacation reading program? Mather has a tradition of giving each student a grade level book to read during each school vacation. Sadly, this year Mather did not receive a RIF grant (Reading is Fundamental) to buy new paperback books, but the librarian had enough donations to give out books for the Christmas break. She hopes to continue the tradition by having books to send home with students for the February and April vacations. She would gratefully appreciate any donations of gently used children's chapter books (books similar to the Magic Treehouse series for 2nd-3rd grade, more complex children's chapter books for 4th and 5th grade). Please put any books you can donate in the Mather bin, Parish House front hall.

Mather School Volunteer Opportunities Still available: Please get in touch with Brenda Black if you have are interested in helping or have questions about any of the opportunities below ([blackpollara@verizon.net](mailto:blackpollara@verizon.net) or (781) 740-2835)

- Promote literacy and excitement about reading by helping put up bulletin board displays (you are invited to design your own or use materials the librarian will give you) :1-2 hrs per month
- Help in the Mather Library by checking-in, shelving, cataloging books: whatever hours you can offer per month.
- Help deliver donations to Mather and see the school: one time, 1- 1 ½ hr

**Hingham Food Pantry**

The food pantry has ongoing need for non-perishable food donations. Please refer to the list on the Serving Others section of the Old Ship website for suggestions of foods/supplies they need regularly. Our food pantry donation box/basket can be found in the front entry way of the Parish House and the Meeting House. Thanks!

Can you help with delivering Old Ship's food donations to the Hingham Food Pantry? The Hingham Food Pantry, located at Second Parish, Main Street, Hingham accepts donations on the 2nd and 4th Mondays of the month, from 2:30-4:00pm. We continue to

need someone to help deliver our donations during those times. Contact Belinda Arams if you can help [beliaram@comcast.net](mailto:beliaram@comcast.net)

**Support the UUSC through attending Coffeehouse off the Square**

Jen Chapin performing on January 18th, 8pm, Fellowship Hall (admission:\$12). Jen Chapin's music is urban folk soul - story songs that search for community and shared meaning, powered by the funk and improvisation of the city. Critics have hailed her work as "brilliant.. soulfully poetic" (NPR), "thoughtful.. worth-savoring" (People) and, "addictive" (Boston Globe). Jazz Times has called her "a first-rate storyteller" while Relix regards her as "one of the freshest voices singing today." Jen has performed on stage with Bruce Springsteen, and opened for Bruce Hornsby, Smokey Robinson, and the Neville Brothers.



Note: If you are involved in serving others in other ways and would like to let our Old Ship community know how they too could become involved, please contact Brenda Black, Chair of the Social Justice Council to have such opportunities included in future newsletters. [blackpollara@verizon.net](mailto:blackpollara@verizon.net) or (781) 740-2835.

[Forward this email](#)



Try it FREE today.

This email was sent to office@oldshipchurch.org by [office@oldshipchurch.org](mailto:office@oldshipchurch.org) | [Update Profile/Email Address](#) | Instant removal with [SafeUnsubscribe™](#) | [Privacy Policy](#).

First Parish, Old Ship Church | 107 Main Street | Hingham | MA | 02043