

COFFEEHOUSE OFF THE SQUARE



2011-2012 Season

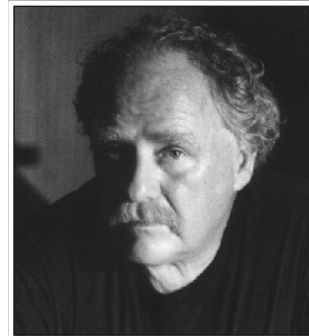
Sept. 24th (4th Saturday)

The Revels' Celebration of the Sea - Back by after too many years, the Revels' Repertory Company explores the lives of whalers during the great age of sail, and of their families who remained on shore. Beginning on the New Bedford docks the program starts with building a whale boat, packing for the voyage, and farewell to friends and family; then goes on to shipboard work and entertainment (love those hornpipes); and to a whale hunt; a storm at sea; and finally a celebration of the crew's safe return. The multi-generational costumed cast of 20 or more brings it all to the Old Ship Parish Hall once again. Come welcome the crew back from another voyage. Revels.org



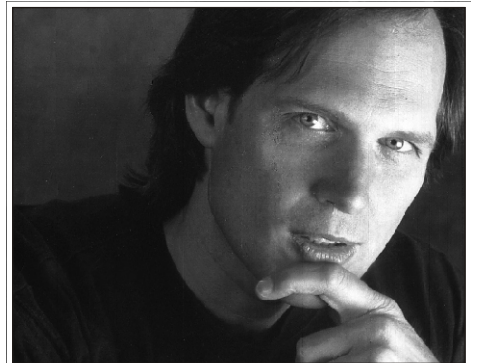
Oct. 15

Bob Martin - Lowell-born Bob Martin has traveled a long road, from mill work, to the 1960s Boston folk scene, to recording in Nashville and farming in New Hampshire, to touring with his slightly raspy delivery and solidly structured words. His album "The River Turns the Wheel" was named the folk album of the year by two newspapers and Si Kahn calls him one of America's best narrative songwriters. We are glad to have him back. Riversong.com



November 19

Greg Greenway - Greg continues to blow audiences away with his dynamic, imaginative style, foot-stomping passion, pungent populism, and underlying personal lyrical intimacy delivered with "one of the strongest and finest voices in folk music." He draws from gospel, blues, rock, and world music - and from life itself. His appeal is also his humanity and soulful affinity with the audience. To sense his humor, ask for "I was mistaken, I barely escaped with my good name." Greggreenway.com



December 11 (2nd Sunday at 4 PM)

Robbie O'Connell, Aoife Clancy and George Keith's Celtic Christmas - The cousins Aoife ("eefa", Irish for Eve) and Robbie of the celebrated Clancy Family and their friend fiddler George Keith celebrate the mid-winter with a Celtic flavor. They explore the Christian and Pagan traditions surrounding the winter solstice through songs and instrumentals. These range from traditional carols from the Celtic countries to pieces from the Irish-American vaudeville stage. Their virtuoso musicianship and diverting interactions create a delightful musical tapestry. Keith was deemed Senior Fiddler at the Midwestern Fleadh Cheoil and is one of this region's most respected traditional Irish musicians. [Robbie O'Connell.com](http://RobbieO'Connell.com) [Aoife Clancey.com](http://AoifeClancey.com) GeorgeKeith.net



2011-2012 Performance Schedule

Or current resident

Non Profit Org.
US Postage
PAID
Hingham, MA
02043
PERMIT # 49

THE OLD SHIP
COFFEEHOUSE
OFF THE SQUARE
107 Main St., Hingham, MA 02043

COFFEEHOUSE OFF THE SQUARE



2011-2012 Season

Jan. 21

Mark Erelli - The intense, prolific Erelli "embodies many of the best qualities of the folk-populist lineage that began with Woody Guthrie, and is carried today by Bruce Springsteen." According to one commentator, his voice, a beautiful blend of wine and whiskey is as intimately conversational as a fireside chat... By exploring some of the big themes of America life and describing how they affect a single life, he makes topical songs personal." Someone not to miss.

Markerelli.com

Feb. 18

Tripping Lily - A distinct experience, described as either "a string band with pop sensibilities or a cutting edge vocal quartet with acoustic instruments," they are featured on the hit TV series "The Big C" and were number one on WUMB for several weeks leading the Boston Globe to call the band "a genre unto itself." The group consists of brothers Demetrius and Alex Becrelis, Monica Rizzio, and Laird Boles on a variety of stringed instruments and vocals. This Cape Cod-based band draws on many influences to create its own "fresh, energetic and alive" sound. They reflect traditional music while being fully contemporary. Another one-of-a-kind evening. [Tripping Lily.com](http://TrippingLily.com)

March 17

Katie McDonnell's Irish Cross County Band - Galway-born and raised, Kate is an accomplished singer-songwriter- guitarist with her song "Lines" featured in the documentary film "Crossing Arizona." Her new band features the popular Bodhran player/singer, Tipperary's Martin Butler, and Matt Leavenworth on fiddle. Martin has been heard at Hingham's Snug and in concert at the high school, and as part of the Celtic group Cunla Dear. Filling out the group is fiddler Matt Leavenworth. One reviewer said the "ever witty bodhran player Martin Butler will quench your winter blues (while) the lilting vocals of Katie McDonnell and the flaming fiddle tunes of Matt Leavenworth while away the evening as you stomp out the beat." KatieMcD.com

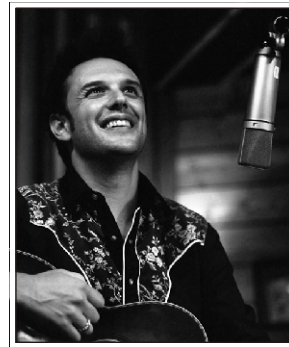
April 21

Peter Mayer - This former seminarian found his calling in music and has lived up to it, most notably with his iconic song in praise of the earth, "Blue Boat Home." One writer notes that he writes songs for a small planet- songs about interconnectedness and the human journey; and about the beauty and the mystery of the world. "Whimsical, humorous, and profound, his music breaks the boundaries of 'folk' to a place of wonder at the very fact of life itself." WUMB's Marilyn Rae-Beyer finds "his guitar work breath-taking, his lyrics mind-spinning, his singing soul-soothing, and his feet-on-the-ground optimism nothing short of healing." Petermayer.net

May 19

David Surette and Susie Burke - "Susie's beautiful, complex voice and David's graceful, nimble-fingered string playing combine with extraordinary results. "She has one of today's finest, purest ballad sopranos (with) phrasing unerringly devoted to the lyric (and a) gift for pulling honest emotional chords" according to the Boston Globe's Scott Alarik. Folk Roots magazine finds David's playing "exemplary". They use their talents to interpret their own songs and some other of the finest contemporary and traditional materials. Perennial favorites.

BurkeSurette.com



All events are at 8 p.m. on the third Saturday of the month except for the Sept. 24 show and the Christmas concert (Sun., Dec. 11, at 4 p.m.) All except the Dec. 11 concert begin with an open microphone.

Admission is \$12 at the door, except \$15 for Sea Revels, The Celtic Christmas, the Katy McDonnell event and Peter Mayer. Net proceeds benefit the Unitarian-Universalist Service Committee. Volunteers welcome (free admission!) Refreshments and beverages available for \$1 each.

Old Ship Church's handicapped-accessible Parish Hall, 107 Main St., Hingham, is just up from the Loring Hall Theatre and on the MBTA'S 220 bus from Quincy, and a scenic long walk from the West Hingham commuter rail station.

For more information, call (781) 749-1767. Visit <http://www.bostoncoffeehouses.org/OldShip/OldShip.html>
